

Project identification

Shatin to Center Link, contract 1121

Type of project

Immersed metro tunnel



Client

Harbour Crossing JV

In co-operation with

Mott MacDonald HongKong

Project assignment

Tender Design

Country

HongKong SAR

Location

HongKong

Project duration

February - October 2014

Project phase

Tender

Construction cost

Not applicable
(excl. VAT)

Consultancy fee

k€ 404,-
(excl. VAT)

Office

Laan 1914 no 35
3818 EX Amersfoort
P.O.Box 28013
3828 ZG Amersfoort
The Netherlands

Telephone

+31 (0)88 348 2540

E-mail

info@TEC-tunnel.com

URL

www.TEC-tunnel.com

Project identification

Shatin to Center Link, contract 1121

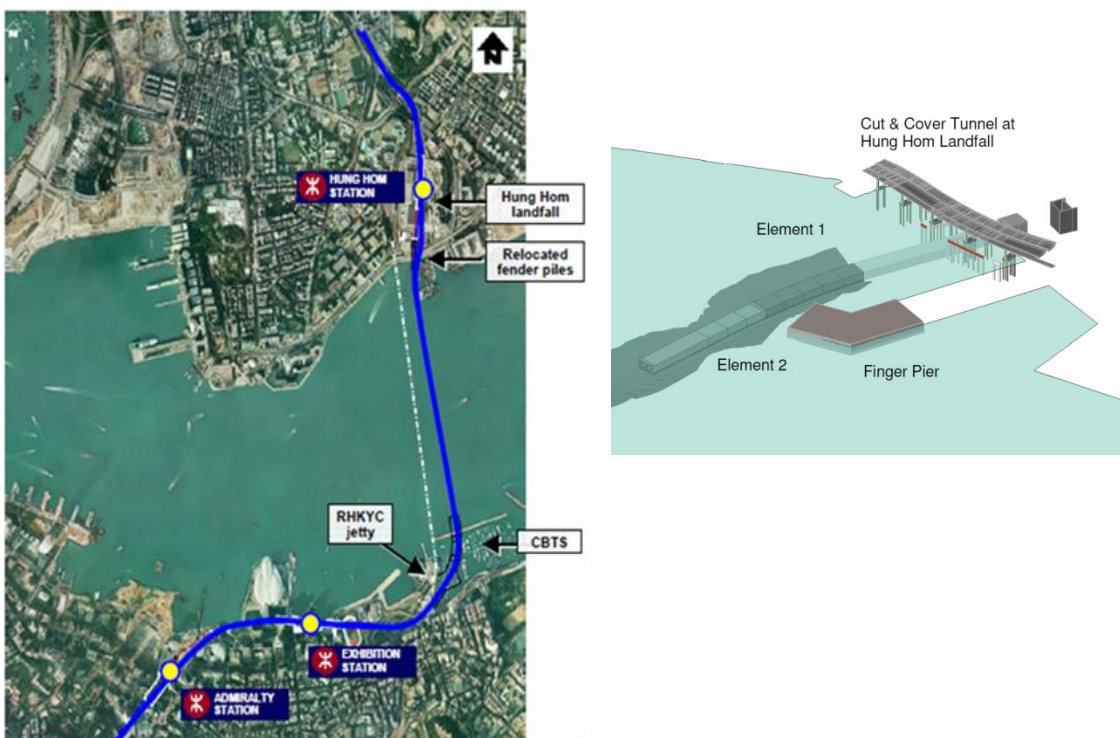
Type of project

Immersed metro tunnel

Project description

The Shatin to Center Link is a new to build subway line between Shatin station on Kowloon Island and HK Central station on HongKong Island. Contract 1121 consists of the connecting Cut and Cover tunnels at Hung Hom Station and the Causeway Bay Typhoon Shelter, and in between an immersed tunnel with a length of 1.3 kilometres suitable for 2 track metro. The tunnel elements will be built in a construction dock (Shek'O) at the south side of HongKong Island and transported to the site in the Victoria Harbour. The Client is MTR, the public transport company of HongKong.

Tender process in a competitive dialogue with the Client and in two stages: 1st Stage submission is a technical bid and 2nd Stage submission is a financial bid and updated technical design.



Scope of work

TEC has been working together with MottMacDonald HK as a sub consultant for the Contractors' JV consisting of Zublin (Germany), Samsung (South Korea), Strukton (The Netherlands) and Hsin Chong (HongKong).

TEC was responsible for the design of the immersed tunnel; the baseline design and several alternatives resulting in an Innovative Design.

TEC Deliverables for the Tender Bid:

- Design Basis of Immersed Tunnel
- Design report Immersed Tunnel
- Design report Innovative Tunnel Design
- Structural Drawings of baseline IMT and Innovative IMT
- Temporary works of Immersed Tunnel
- BIM/Revit Design